

This document must not be copied, either completely or in part, without permission. Any infringement will have legal consequences ©



D

C

B

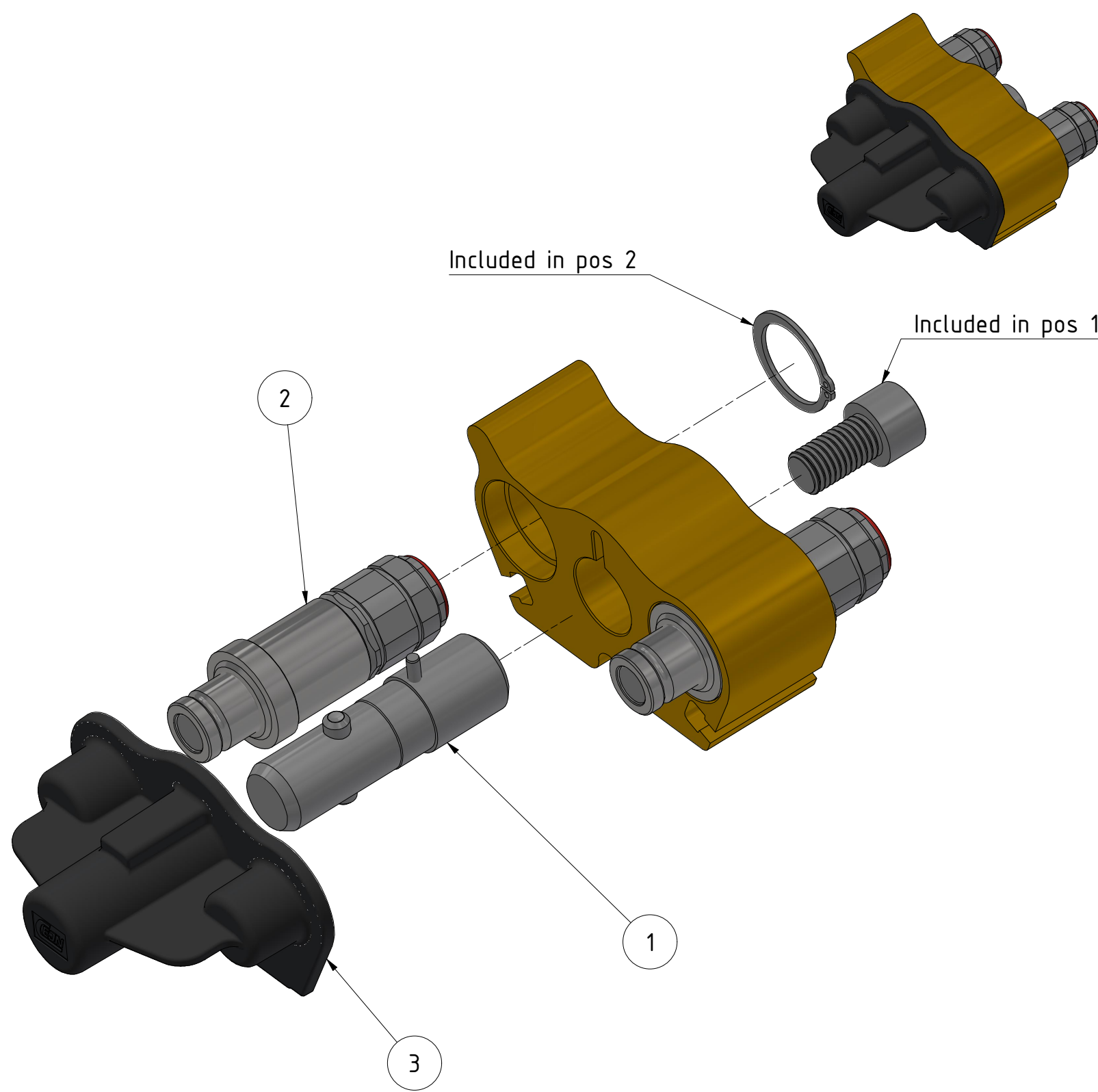
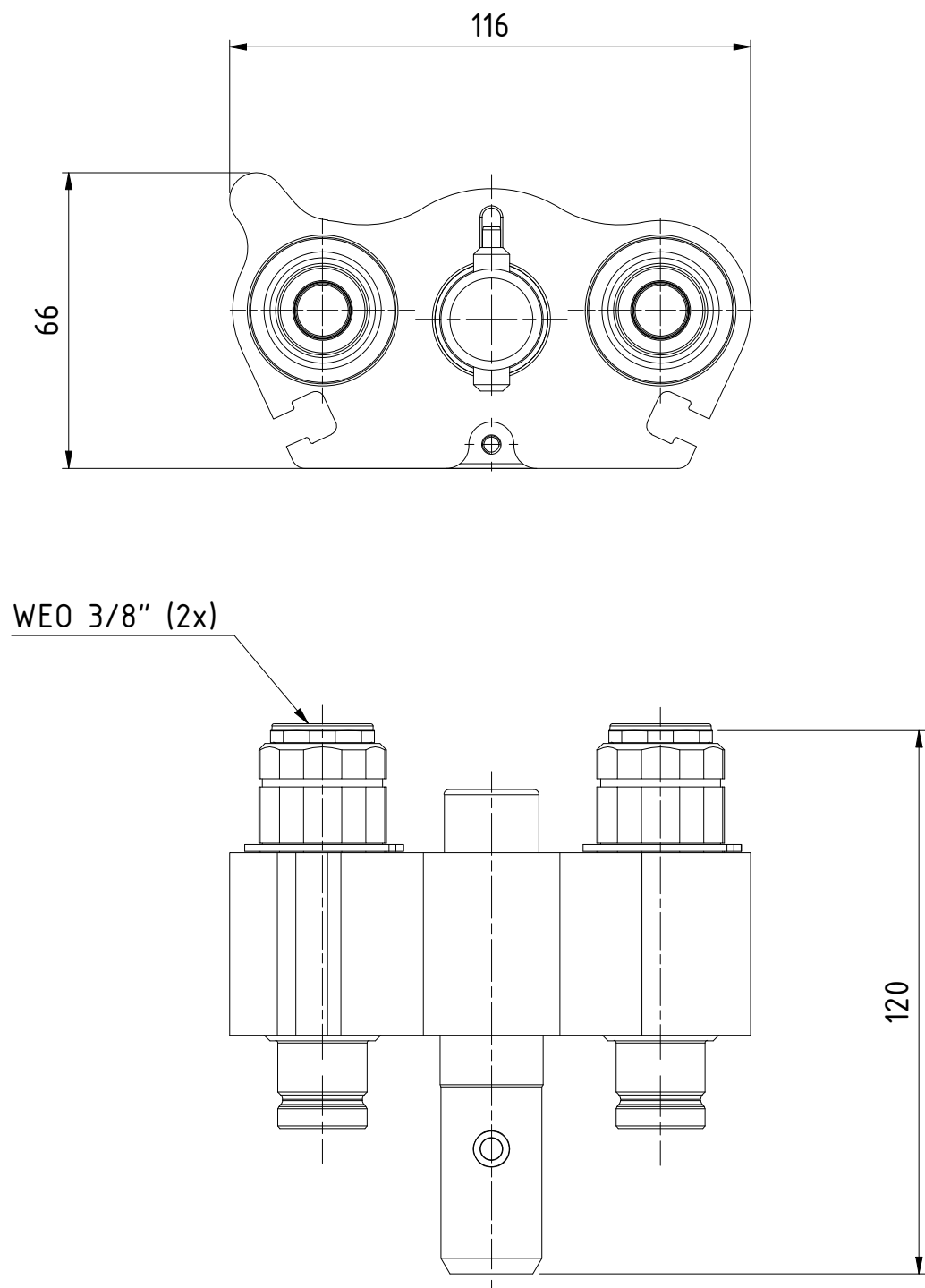
A

D

C

B

A



Product No. 109322150	
Nominal flow \varnothing DN:	10 mm
Connection Stroke:	mm
Max WP Connected:	350 bar
Max WP Disconnected:	350 bar
Min BP Connected:	1200 bar
Min BP Disconnected:	1200 bar
Temperature range:	-30°C - 100°C
Connection:	WEO 3/8" (DN10)
Sealing material:	NBR
Hexagon:	

3	1	Dust Cap		109321050
2	2	Nipple Kit DN10		103646909
1	1	Center Bolt Kit		109324962
Item	Qty	Description	Material	Part Number
		Drawn CABEMPE07	Checked JoEr	Approved PMB
		Multi-X GII Duo DN10 Male - WEO 3/8"		Date
				Former No.
		Drawing No. 109322150		Scale 2 : 3
				Sheet 1 / (1)
				Issue A